

Recharge.  
Relax.Repeat.





# Recharge. Relax.Repeat.

Thank you for making a better hearing decision by selecting the **Starkey®+ ZPower®** rechargeable system! This guide will offer useful instructions and tips for your new rechargeable hearing aids.

## What's Inside

Your rechargeable hearing aids will be delivered to you in two boxes. Please note that both ZPower rechargeable batteries and disposable batteries will work in your device. Both options are provided for you.

### Your hearing aid box comes with:

- Your hearing aids (batteries not yet installed)
- Hearing aid case
- Cleaning brush
- Hear Clear™ Receiver Wax Guards
- Microfiber cloth
- Extra disposable, size 312, Zinc Air batteries (should you choose not to always use your rechargeable batteries)
- Carrying case
- RIC (Receiver-In-Canal) Operations Manual

### The ZPower rechargeable battery box includes:

- The ZPower charger
- ZPower rechargeable batteries (with a distinct gold and silver color)
- USB wall adapter
- Operations manual

## Micro RIC 312t Overview

### Your hearing instrument controls include:

1. Hearing Instrument
2. Cable
3. Receiver
4. Microphones
5. Push Button (user control)
6. Battery compartment (on/off control), location of serial number, location of left/right side instrument indicator (red is for right ear, blue is for left ear)

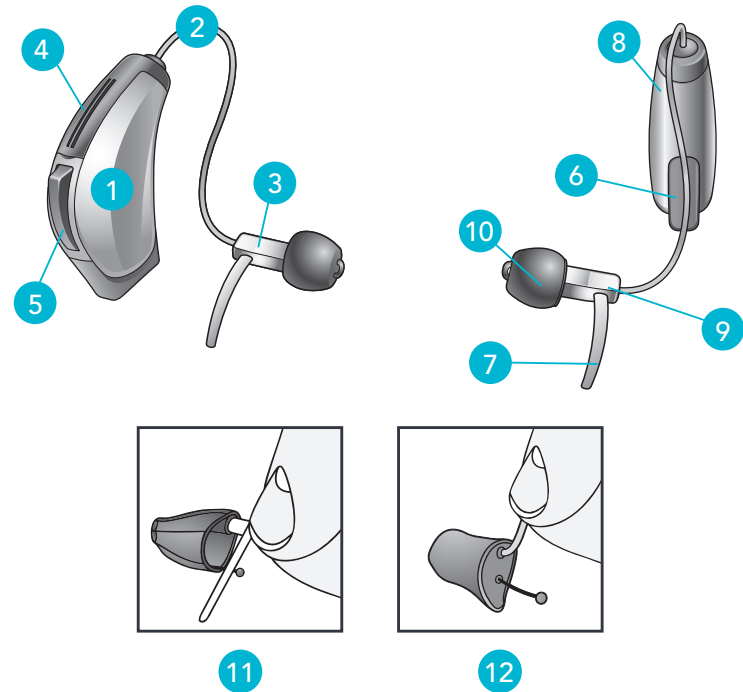
### Your hearing instrument can be identified by:

7. Retention Lock
8. Location of manufacturer's name and model name
9. Location of left/right side receiver indicator

### Comfort Fit Solution:

10. Instant Fit Earbud
11. Custom Earmold (optional)
12. RIC Custom Power Earmold (optional)

## Features, Controls and Identification



## How to Install ZPower Batteries

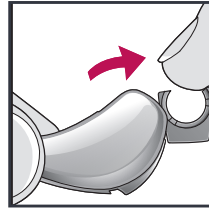
Your hearing instrument uses a battery as its power source. You're able to use both ZPower rechargeable batteries and disposable 312 Zinc Air batteries in your hearing aids. Your ZPower batteries come fully charged and are ready for use.

### To insert or replace the rechargeable battery:

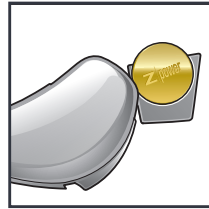
1. Open the battery door.
2. Place the battery inside the battery door (gold side up).
3. Close the battery door.

### Helpful Hints

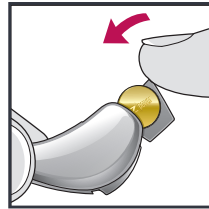
- **NEVER FORCE THE BATTERY DOOR SHUT.** This could result in serious damage; if the door will not close securely, check that the battery is inserted correctly.
- Dispose of used batteries immediately in the proper waste or recycling container.



1



2



3

## Maintenance

Proper use will help to extend the life of your battery.

### Battery Tips

- Charge the batteries regularly before wearing them.
- Charge the batteries at temperatures between 50°F (10°C) and 104°F (40°C).
- Don't place the batteries in the charger if the charger is unplugged, this will drain the batteries.
- If you don't intend to use your hearing aids for several days, remove the batteries.
- Your rechargeable battery should last for approximately one year, and can be easily replaced by your hearing professional at that time.

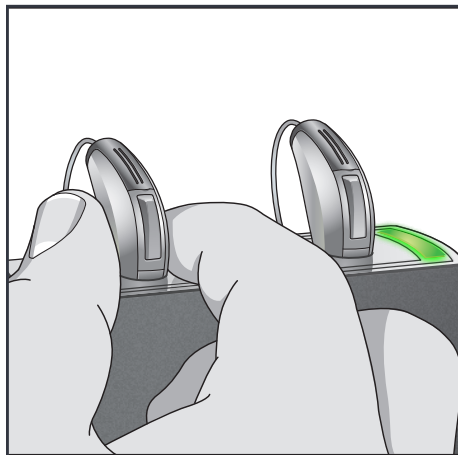
## How to Charge Your Hearing Aids

To get started, plug the power cord into the USB wall adapter and into a power outlet. When it's first plugged in, both charger lights will briefly turn green.

### Charging Your Hearing Aid

#### 1. Place Your Hearing Aids on the Charger

Hold your hearing aids by their base (not the cable), and place them in the charging slot. Both the cables and receivers should be facing the same side of the charger as the power cable. When your hearing aids are correctly placed, both lights will begin blinking green. Note: Hearing aids automatically turn off when placed into the charger. There is no need to open your battery door.



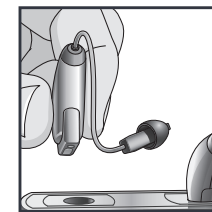
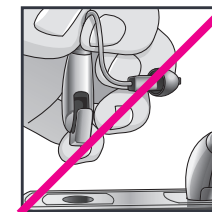
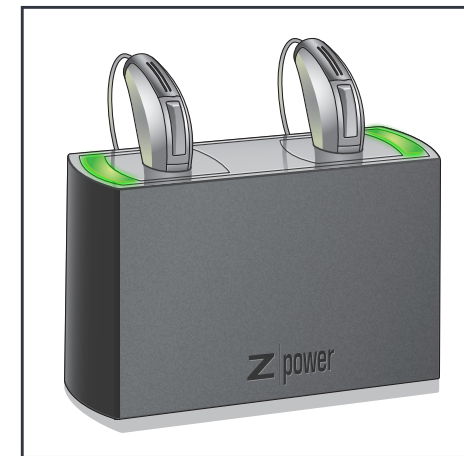
#### 2. Wait 3-4 Hours

When the green lights are blinking, your hearing aids are charging. When the lights stop blinking and turn solid green, your hearing aids are completely charged.

#### 3. Remove, And Wear Your Hearing Aids

Pick up your hearing aids by the base of the hearing aid, NOT by the cable. Your hearing aids will turn on automatically when removed from the charger.

You can remove your hearing aids before they're completely charged, but they won't last as long as when they're fully charged. It's best to leave your hearing aids in the charger any time you're not using them. They won't overcharge, so be sure to charge your hearing aids at the end of each day.



## Troubleshooting

Approximate Battery Capacity			
Hours of Streaming	Hours of Use 50dB Receiver	Hours of Use 60dB Receiver	Hours of Use 70dB Receiver
0	22	20.5	21.5
1	20	18.6	19.5
2	18	16.7	17.6
3	16	14.9	15.6

**Charging Time:** Recharge times are approximately 4-5 hours.

Charger lights	Problem	Recommended Action
No lights	Hearing aid is not inserted into the charger correctly or the charger is not powered.	Remove hearing aid(s) and replace in correct orientation. Verify USB cable is properly connected to USB wall adapter. Verify USB wall adapter is functional by plugging in another USB device.
One or both lights solid red	Battery won't charge.	Verify hearing aid battery is a ZPower rechargeable battery.
Both lights flashing red	Temperature is out of range. Charging is paused until temperature is in range.	Move charger to an environment between 50°F (10°C) and 104°F (40°C).

**Consult your hearing care professional if any problem persists.**

Make sure the rechargeable batteries are inserted correctly (gold side up).

## Hearing Aid Information

Instrument model: \_\_\_\_\_

Serial number: R \_\_\_\_\_ L \_\_\_\_\_

Warranty expiration date: \_\_\_\_\_

Battery size: \_\_\_\_\_

Memory settings, if applicable: \_\_\_\_\_

Memory #	Environment/ Listening Situation	Beep/Indicator

**Special instructions:** \_\_\_\_\_

---



---



---



---



---



---



---



---



---



---

**Hearing professional:**

---



---



---



---



---

